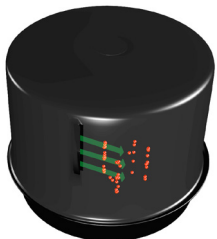


PreCleaners

WIX Pre-Cleaners extend the life of your primary filter by capturing and removing both moisture and large solid contaminants. The inlet fins of the Pre-Cleaner force incoming air into a spinning cyclonic motion. This increased air velocity forces heavier than air contaminants in an outward direction where they are expelled from the Pre-Cleaner through a vented opening. The purged air is then forced on to the primary air filter.



The robust, non-corroding design of WIX Pre-Cleaners make them tolerant to all weather conditions and suitable for use on both on-road and off-road applications.

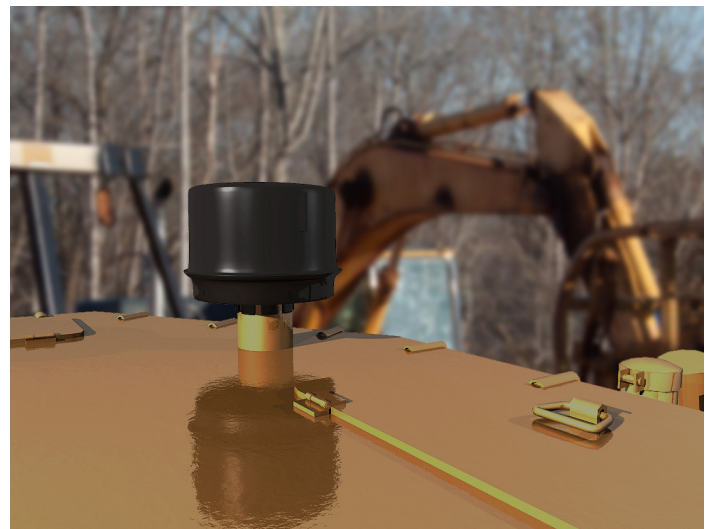


FEATURES:

- Durable rust resistant design
- Maintenance free
- Easy installation
- Self emptying
- No power required
- WIX is 99% efficient @ 20 Micron or larger
- Operating air flow ranges 90-1,500 CFM

BENEFITS:

- Aids in the removal of moisture and solid contaminants
- Extends the life of primary filter
- Improves system efficiency
- Reduces overall operational cost
- Separates up to 85% of incoming contaminants





SPECIFICATIONS

Catalog No.	24165	
Height	5.75in	(146)
Outer Diameter	6.38in	(162)
Outlet Diameter	2.00in	(53)
Flow- Rate	90-200 CFM	

Catalog No.	24166	
Height	5.75in	(146)
Outer Diameter	6.38in	(162)
Outlet Diameter	2.25in	(58)
Flow- Rate	90-200 CFM	

Catalog No.	24167	
Height	5.75in	(146)
Outer Diameter	6.38in	(162)
Outlet Diameter	2.50in	(64)
Flow- Rate	90-200 CFM	

Catalog No.	24168	
Height	5.75in	(146)
Outer Diameter	6.38in	(162)
Outlet Diameter	3.00in	(77)
Flow- Rate	90-200 CFM	

Catalog No.	24169	
Height	9.39in	(238)
Outer Diameter	9.51in	(242)
Outlet Diameter	3.00in	(77)
Flow- Rate	200-450 CFM	

Catalog No.	24170	
Height	9.39in	(238)
Outer Diameter	9.51in	(242)
Outlet Diameter	3.83in	(97)
Flow- Rate	200-450 CFM	

Catalog No.	24171	
Height	9.39in	(238)
Outer Diameter	9.51in	(242)
Outlet Diameter	4.00in	(103)
Flow- Rate	200-450 CFM	

Catalog No.	24172	
Height	11.30in	(287)
Outer Diameter	11.32in	(288)
Outlet Diameter	4.00in	(103)
Flow- Rate	450-750 CFM	

Catalog No.	24173	
Height	9.39in	(238)
Outer Diameter	9.51in	(242)
Outlet Diameter	4.50in	(116)
Flow- Rate	200-450 CFM	

Catalog No.	24174	
Height	11.30in	(287)
Outer Diameter	11.32in	(288)
Outlet Diameter	4.50in	(116)
Flow- Rate	450-750 CFM	

Catalog No.	24175	
Height	11.30in	(287)
Outer Diameter	11.32in	(288)
Outlet Diameter	5.00in	(128)
Flow- Rate	450-800 CFM	

Catalog No.	24176	
Height	13.54in	(344)
Outer Diameter	15.62in	(397)
Outlet Diameter	6.00in	(153)
Flow- Rate	750-1500 CFM	

Catalog No.	24177	
Height	13.54in	(238)
Outer Diameter	15.62in	(242)
Outlet Diameter	7.00in	(179)
Flow- Rate	750-1500 CFM	