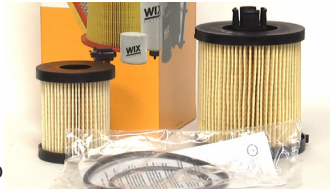
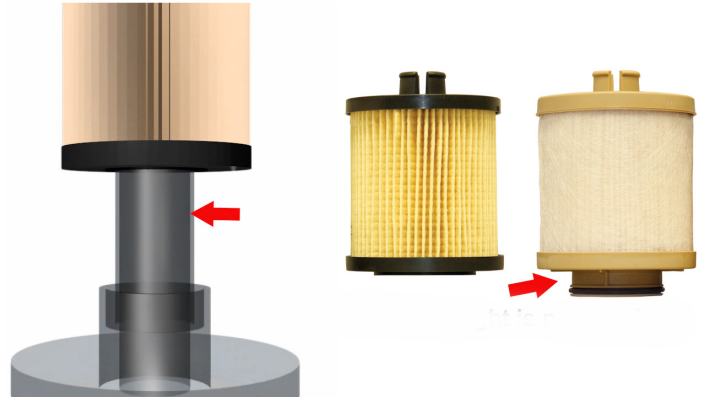


WIX 33899 Fuel-Water Separator

The WIX 33899 is a two element kit which includes a fuel water separator and a secondary particulate filter. Intended for vehicles with the International™ 6.0L diesel engines, both filter elements have been engineered to provide superior protection for the two stage fuel filtering system of these applications.



Because the 33899 fuel water separator seals at the post, the extra extension is not required.

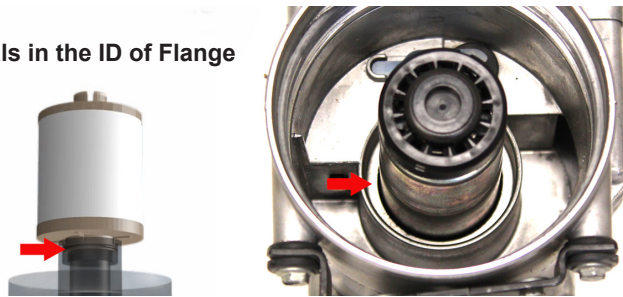


When compared to the OE style fuel water separator, both the height and the white membrane material of the OE style filter stand out as notable differences.



When installed both filters seal radially, however the sealing point is different for each. The OE style filter seats and seals in the ID of the flange in the filter housing. This design requires an extended area at the bottom of the filter which fits into the flange area. The radial seal is formed as the filter is seated.

Seals in the ID of Flange



Another notable design difference is the membrane that covers the media of the OE style filter. As fuel water separators, both filters are charged with preventing the water content found in all diesel fuel from entering the system. Both filters rely on the differing physical properties of water and fuel to accomplish this.

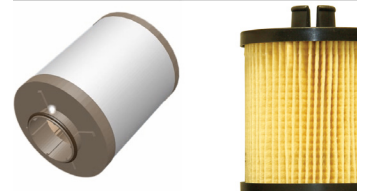
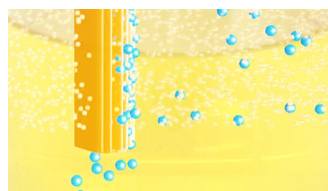
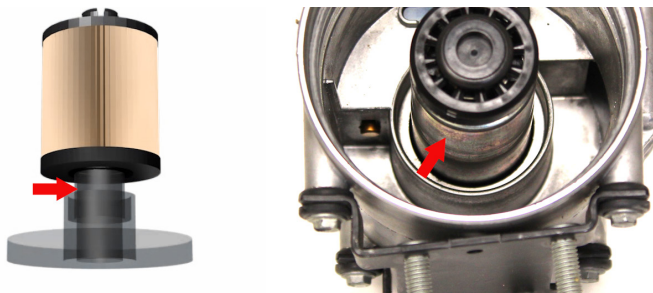
The white membrane material is not required for the WIX filter as its media is a proprietary blend that has been engineered with increased hydrophobic properties.



This means the media itself is chemically resistant to the flow of water. As the fuel water mixture attempts to pass through the media, the water content is stripped out. The water molecules are more dense than those of the fuel and collect in the bottom of the housing to be drained out based on the manufacturer's suggested guidelines. Because the WIX filter does not use the membrane construction, bleed holes are also not required to vent the air than can become trapped under such coverings.

The WIX 33899 filter creates a radial seal around the center post of the housing.

Seals Around Center Post



For questions, application inquires, or further information please contact your local WIX Filters District Manager or call Product Information at 1.800.949.6698.